



**India Meteorological Department  
(Ministry of Earth Sciences)**

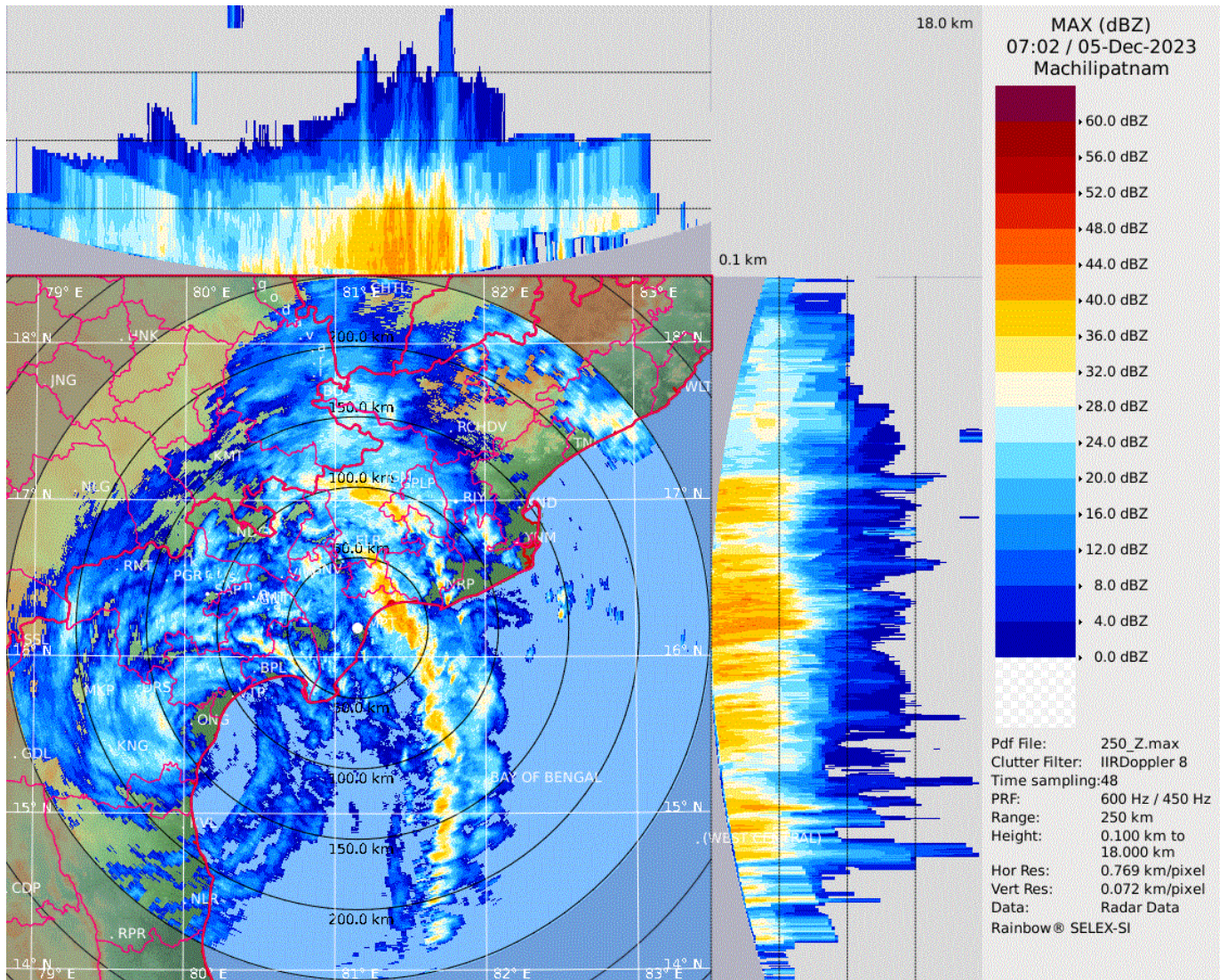
HOURLY UPDATE ON SEVERE CYCLONIC STORM "MICHAUNG"

**BULLETIN NO. 14**

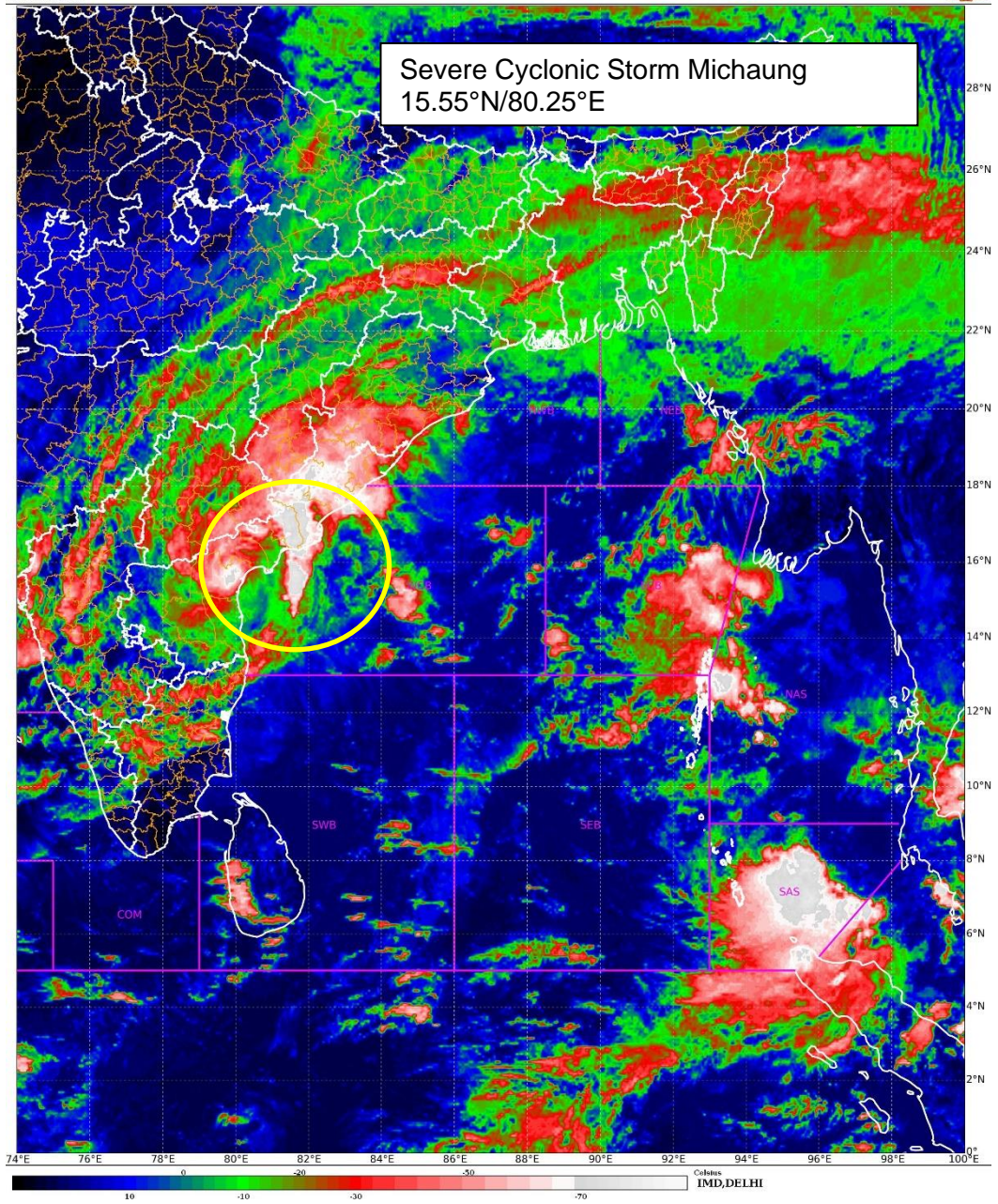
DATE: 05-12-2023

TIME OF ISSUE: 1330 HRS IST

<b>DATE/TIME (IST) OF OBSERVATION</b>	<b>BASED ON 05-12-2023 (1230 HRS IST)</b>
LOCATION LATITUDE/LONGITUDE	THE <b>SEVERE CYCLONIC STORM "MICHAUNG"</b> (PRONOUNCED AS MIGJAUM) OVER WESTCENTRAL BAY OF BENGAL ALONG AND OFF SOUTH ANDHRA PRADESH COAST MOVED NORTHWARDS WITH A SPEED OF 10 KMPH DURING PAST 06 HOURS AND LAY CENTERED AT 1230 HOURS IST OF 5TH DECEMBER, 2023 OVER THE SAME REGION NEAR LATITUDE 15.55°N AND LONGITUDE 80.25°E, ABOUT 20 KM EAST-NORTHEAST OF ONGOLE, 45 KM SOUTHWEST OF BAPATLA, 80 KM NORTH-NORTHEAST OF KAVALI, 120 KM NORTH-NORTHEAST OF NELLORE, AND 110 KM SOUTHWEST OF MACHILIPATNAM. <b>THE FORWARD SECTOR OF SYSTEM HAS ENTERED THE LAND.</b>
CURRENT INTENSITY NEAR CENTRE	90-100 KMPH GUSTING TO 110 KMPH.
PAST MOVEMENT	MOVED NORTHWARDS WITH A SPEED OF 10 KMPH DURING PAST 06 HOURS.
FORECAST MOVEMENT	THE SYSTEM IS LIKELY TO MOVE NEARLY NORTHWARDS AND CROSS SOUTH ANDHRA PRADESH COAST CLOSE TO BAPATLA DURING NEXT 2 HOURS AS A SEVERE CYCLONIC STORM WITH A MAXIMUM SUSTAINED WIND SPEED OF 90-100 KMPH GUSTING TO 110 KMPH. <b>LANDFALL PROCESS IS CONTINUING AND LIKELY TO COMPLETE DURING NEXT 3 HOURS.</b>
OBSERVED RAINFALL FROM 0830 HRS IST TO 1230 HRS IST (0300-0700 UTC) OF 05 <sup>TH</sup> DEC. (mm)	BAPATLA - 43.3; KAVALI - 29.3; MACHILIPATNAM - 28.5; NARSAPUR - 18.4; ONGOLE - 5.2; NELLORE - 5.2; KAKINADA - 0.7.
OBSERVED RAINFALL FROM 0830 HRS IST (0300 UTC) OF 04 <sup>TH</sup> DEC TO 0830 HRS IST (0300 UTC) OF 05 <sup>TH</sup> DEC. (mm)	<b>IMD OBSERVATORY</b> BAPATLA - 222; NELLORE - 218.1; MACHILIPATNAM - 157; KAVALI - 145.1; TIRUPATHI AP - 126.9; ONGOLE - 118.2; KAKINADA - 82; GANNAVARAM - 70.6; NARSAPUR - 62.7; AMARAVATI - 47.2; TUNI - 26.6; KALINGAPATNAM - 24; KURNOOL - 8.8; <b>AWS AGRO/ARG</b> PODALAKUR - 214; REPALLE - 118; CHINNA_GANJAM - 79.5; DARSU_KVK - 73; KAKINADA - 73; UTKURU_KVK - 66; LAM_AMFU - 57; KALAVACHARLA_KVK - 56; NARSAPUR - 55; MEHADRIGADDA_DAM - 53; KV_GOPANNAPALEM_ELURU - 35.5; KAILASHGIRI - 35.5; ANKAPALLI_AMFU - 34.5; VENKATARAMANNAGUDEM_KVK - 34.5; PEDA_ARAVEEDU - 34.5; YELLAMANCHILLI_VSKP - 32.5; VIJAYARAI - 28; AROGYAVARAM - 22; PANDIRIMAMIDI_HRS - 21; GANGAVARAM_PORT - 20; GARIKAPADU_KVK - 19.5; CHITTOOR - 13; NARASARAOPET - 12.5; GOTTABARRIEGE - 10.5; PALAKONDA - 7.5.



**Maximum Reflectivity from DWR Machilipatnam based on 0702 UTC of 05<sup>th</sup> December 2023**



**INSAT 3D Image based on 0530 UTC of 05<sup>th</sup> Dec 2023**